

Aldreds
Estate Agents



12 Ranworth Close

Belton, Great Yarmouth, NR31 9JX

Guide Price £425,000 - £450,000



12 Ranworth Close

Belton, Great Yarmouth, NR31 9JX

GUIDE PRICE £425,000 to £450,000. A fantastic extended and extremely well presented four bedroom detached bungalow sitting in the popular villages of Belton. The property has been recently refurbished by the current owners and an internal inspection is essential. There is a large entrance hall, stunning kitchen/diner/sitting room and a formal lounge. Master bedroom with dressing room and ensuite shower room, three further bedrooms, utility room and a family bathroom. Gas central heating (installed 20222) and double glazing. The property was also rewired in 2022. Outside there is a driveway to front and a low maintenance garden to rear with large summerhouse/bar

Entrance Hall

Entrance door to side, radiator

Kitchen/Diner/Sitting Room

24'5" x 18'5" plus recess (7.46 x 5.62 plus recess)

Wood burner, base storage units with quartz worktops, Island unit, two double glazed windows to front aspect, double glazed windows to both sides, wine fridge, gas cooker point, integrated dishwasher extractor hood, inset ceiling lights

Lounge

16'4" x 13'1" (5 x 4)

Double glazed French doors to rear garden, double glazed window to front aspect, radiator

Utility Room

14'1" max 5'4" min x 4'3" max 2'11" min (4.31 max 1.65 min x 1.32 max 0.9 min)

Door to rear garden, storage units, plumbing for washing machine

Master Bedroom

18'0" x 12'0" (5.5 x 3.67)

Built in wardrobe, double glazed window to rear aspect, radiator

Dressing Room

7'6" x 3'7" (2.3 x 1.1)

Two built in wardrobes

Ensuite Shower Room

7'6" x 5'10" (2.3 x 1.8)

Shower in cubicle, low level WC, hand basin, opaque double glazed window to side aspect, heated towel rail

Bedroom 2

12'5" x 11'7" (3.8 x 3.55)

Double glazed French doors to rear garden, radiator





Bedroom 3

10'4" x 9'6" (3.15 x 2.9)

Double glazed window to side aspect, radiator

Bedroom 4

9'6" x 9'6" (2.9 x 2.9)

Double glazed window to side aspect, radiator

Bathroom

9'11" x 5'9" (3.03 x 1.76)

Panel bath, hand basin, low level WC, part tiled walls, opaque double glazed window to side aspect, heated towel rail

Outside

To the front of the property there is a driveway. To the rear there is a low maintenance paved and decked garden with astro turf, timber summer house and bar 4.6m x 2.2m with power and light

Tenure

Freehold

Services

Mains water, electricity, gas, drainage

Council Tax

Band C

Location

Belton is situated 3 miles west of Gorleston and 5 miles from Great Yarmouth
* There are a selection of local shops * Primary and Middle schools * The River Waveney runs through the adjoining village of Burgh Castle with its historic Roman site and Marina * There are regular bus services to Great Yarmouth.

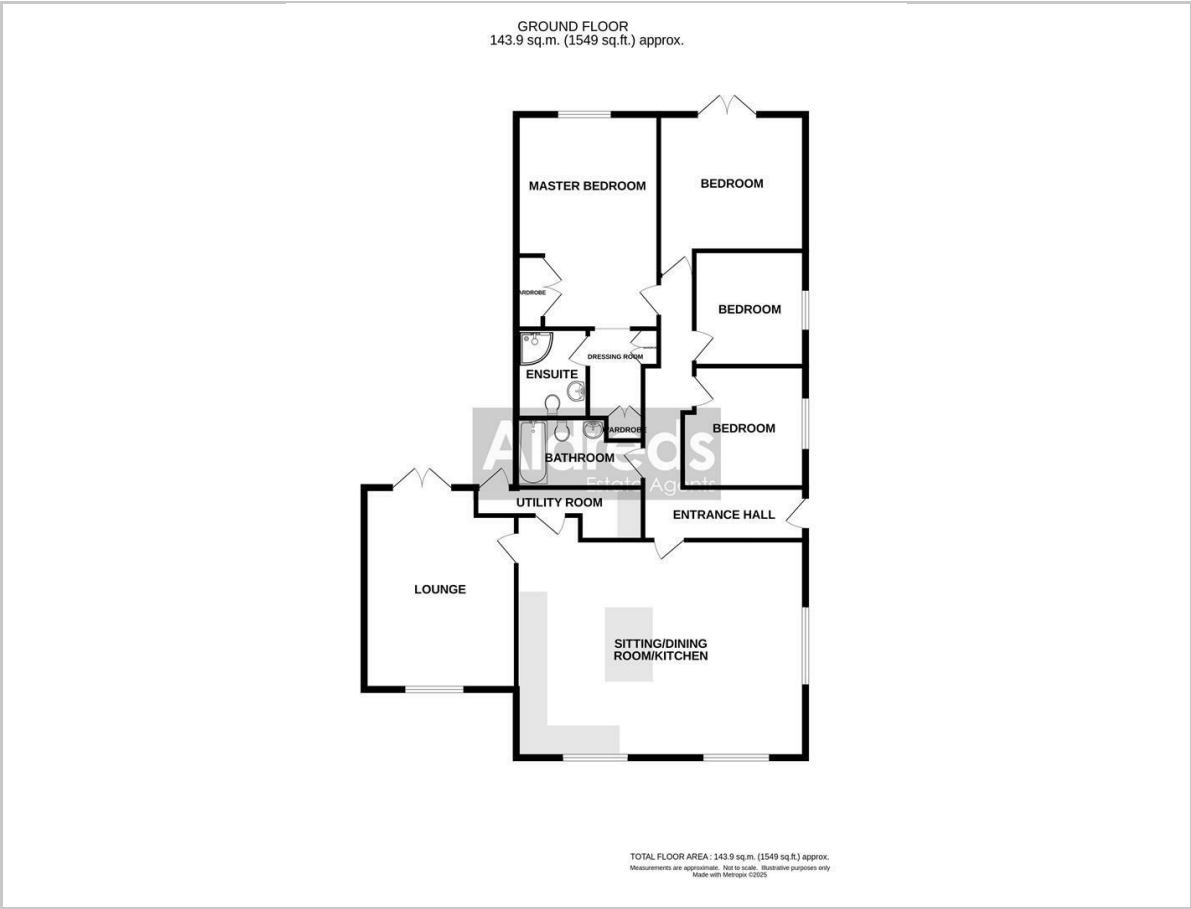
Directions

Leave Gorleston on the A143 Beccles Road, continue through Bradwell, turn right at the roundabout into New Road, continue into Belton, turn right into Ranworth Close.

Ref G18411/11/25



Floor Plan



Viewing

Please contact our Aldreds Gorleston Office on 01493 664600
if you wish to arrange a viewing appointment for this property or require further information.

Disclaimer
These particulars are issued on an understanding that all negotiations shall be conducted through Messrs. Aldreds. Please note: Messrs. Aldreds for themselves and for the vendors or lessors of this property whose agents they are given notice that: 1. Particulars are set out as a general outline only for guidance of intending purchasers or lessees, and do not constitute nor constitute part of, an offer or contract. 2. All descriptions, dimensions, references to condition and necessary permissions for use and occupation, and other details are given without responsibility and any intending purchasers or tenants should not rely on them as statements or representations of fact but must satisfy themselves by inspection or otherwise as to the correctness of each of them. 3. No person in the employment of Messrs. Aldreds has any authority to make or give any representation or warranty whatever in relation to this property. 4. If you are proposing to visit the property and are travelling some distance please check with Aldreds on the issue of availability prior to travelling. 5. Aldreds Property Consultants and associated services may offer additional services to the prospective purchaser for which they will be entitled to receive a commission. Aldreds are pleased to be working with Mortgage Advice Bureau. They're an award-winning mortgage broker with over 1,400 advisers across the UK, and have access to over 12,000 mortgage products from over 90 lenders. Aldreds Estate Agents Ltd receive a commission of £200 on each completed case. Your home may be repossessed if you do not keep up repayments on your mortgage. There may be a fee for mortgage advice. The actual amount you pay will depend upon your circumstances. The fee is up to 1%, but a typical fee is 0.3% of the amount borrowed. Mortgage Advice Bureau is a trading name of Mortgage Seeker Limited which is an appointed representative of Mortgage Advice Bureau Limited and Mortgage Advice Bureau (Derby) Limited which are authorised and regulated by the Financial Conduct Authority. Mortgage Seeker Limited Registered Office: Lovewell Blake, Sixty Six North Quay, Great Yarmouth, Norfolk, NR30 1HE. Registered in England Number: 03721415. 6. Potential purchasers should check with their providers that the broadband and mobile phone coverage they would require is available.

Area Map



Energy Efficiency Graph

